

55-20 weigh module



product description

Flintec load cell supports are designed to prevent unwanted forces from affecting load cell performance.

The type 55-20 is a self-aligning weigh module, with excellent load introduction. The module is specially designed for Flintec's rocker column load cells for use in hopper and tank weighing applications. The module incorporates an integrated bumper-stop eliminating the need of using check links thereby offering highest possible precision. The weigh module is shipped completely pre-assembled; ready for installation by welding or bolting.

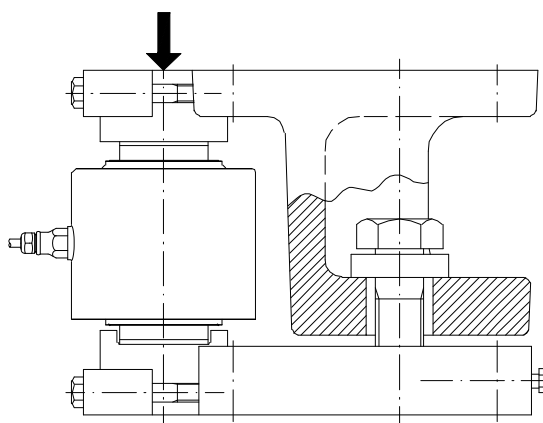
applications

Silo and tank weighing systems.

note

The weigh module can be installed upside down in order to get through holes $\varnothing D2$ on top. This is shown to the right.

The standard orientation is shown on the next page.



key features

Wide range of capacities from 7.5t through to 300t

Mild steel, zinc plated (7.5t-100t)
Cast mild steel, painted (150t-300t)

Mild steel, zinc plated (7.5t-100t)
Cast mild steel, painted (150t-300t)

Very easy to install

Especially designed for hopper and tank weighing

With integrated bumper-stop for the highest precision

Integrated lift-off protection

Integrated bump stops

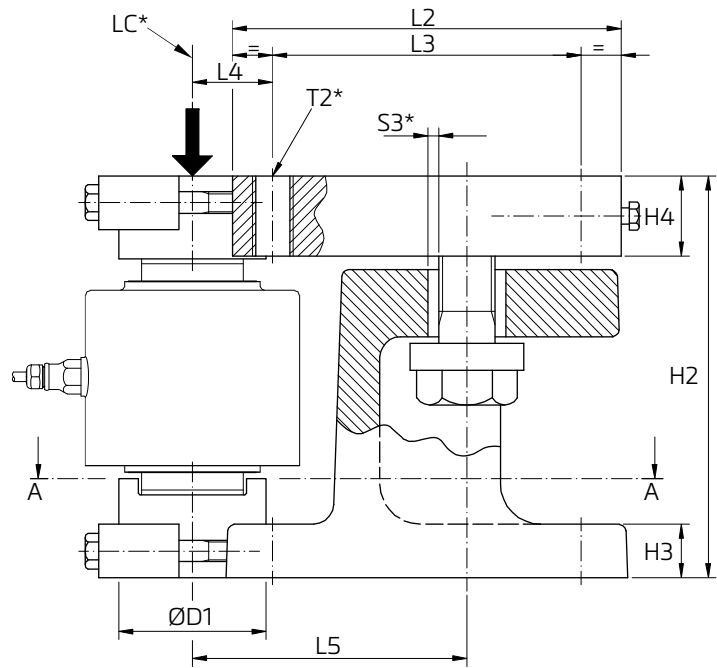
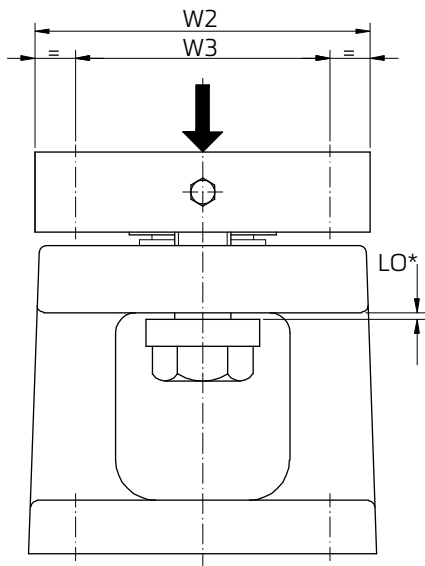
Load cell replacement requires minimum lifting height

Rocking action of load cells allows for temperature expansion

RoHS
compliant

 **flintec**
quality + precision

product dimensions (mm)



key

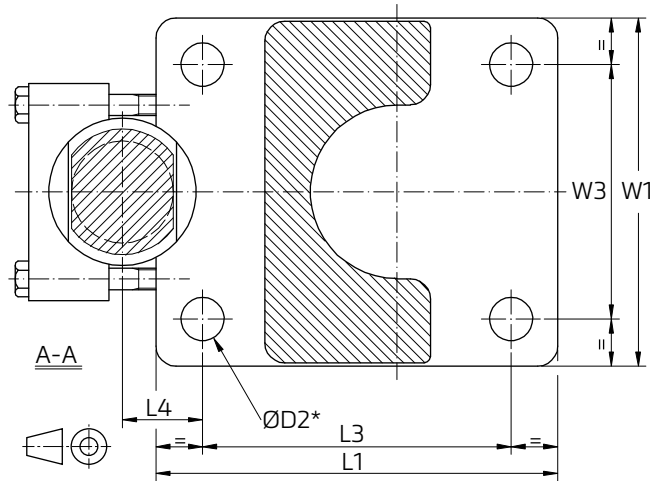
- LC* - Load center
- T2* - for mounting bolts, 4x
- S3* - bumping gap
- LO* - lift-off gap
- ØD2* - for bolt size T2

general

The module can preferably be welded to tank foot and foundation plate. This eliminates problems of getting holes on top and bottom lined up. Or for example bolted on top and welded on bottom.

attention

- Mounting bolts are not included in delivery.
- Silo foot and foundation plate to be horizontal:
 - within 0.4/100 for legal for trade applications,
 - within 0.8/100 for general applications.



Load cell type	D1	D2	H2	H3	H4	L1	L2	L3	L4	L5	W1	W2	W3	S3	T2	Max lift off force (kN) *	Max side force (kN)*	Weigh excl load cell (kg)
RC3-7.5/15/22.5t	50	17.5	130	20	35	166	160	130	25	100	136	130	100	5	M16	100	50	15
RC3-30/40t	60	22	200	28	40	220	210	170	30	125	160	150	110	6	M20	180	90	33
RC3-50/100t	85	26	250	34	50	260	250	200	45	165	210	200	150	7	M24	300	150	65
RC3-150t	110	33	300	40	60	300	290	230	60	205	260	250	190	8	M30	400	200	113
RC3-300t	135	39	400	60	70	370	350	280	65	235	320	300	230	10	M36	600	300	225

Note:

- In tank/silo applications with 3 respectively 4 weigh modules can be assumed that minimum 2 modules will equally share actual side force (wind) on the tank/silo.
 - Actual lift off force shall, for worst case, be assumed being taken by one module.
- For seismic events, the minimum break loads are increased to 200% of lift-off forces and 250% of side forces.

Dimensions and specifications are subject to change without notice.